

# 1 University Way Redesign

## Public Consultation



UBC is undertaking a process to redesign University Way between Alumni Avenue and International Mews at the heart of campus.

UBC is consulting the campus community on the redesign of University Way, which will transform it into a vibrant pedestrian and bicycle-only “Main Street” that supports student gatherings, informal interaction, festivals and celebrations.

### **Public Open House - 11am to 2pm**

- Join the conversation, tell us what you would like to see in the redesign of University Way!
- Staff are on hand to draw your ideas, answer questions and discuss the project
- You can also submit your ideas online at [campusplanning.ok.ubc.ca](https://campusplanning.ok.ubc.ca) until April 10

The result of the redesign process will be a proposed design for University Way that is presented to UBC Executive for approval in Winter 2016/17.





# 2a University Way Redesign

## Background + Project Principles

The UBC Okanagan Campus Plan envisions University Way as a future “Main Street” at the heart of campus that will bring people together for informal gatherings, learning, festivals and celebrations.



### Background

Defined by Alumni Avenue at one end and International Mews at the other, this portion of University Way is envisioned as a vibrant pedestrian and bicycle-only public space that will bring people together for informal gatherings, learning, festivals and celebrations.

The vision for University Way is supported by the key principles in the Campus Plan, which are to:

- have a welcoming and connected campus
- celebrate place
- enhance campus vitality, and
- manage campus growth through a whole systems (environmental, economic and social sustainability) lens.

University Way is currently the only vehicle access point to the west side of campus used by commuters arriving from Highway 97. With student housing, the University Centre building and parking lots located north of University Way, thousands of people cross this area daily on their way to the campus’s academic core.

The intention is that the portion of University Way would become a pedestrian and bicycle-only space once an access road from John Hindle Drive, on the west side of campus, is completed in 2018.



# 2b University Way Redesign

## Background + Project Vision

The UBC Okanagan Campus Plan envisions University Way as a future “Main Street” at the heart of campus that will bring people together for informal gatherings, learning, festivals and celebrations.



### Vision for the Redesign of University Way

The vision for transforming this portion of University Way from a roadway to a pedestrian and bicycle-only “Main Street” at the heart of campus reflects the input received from the campus community through The UBC Okanagan Campus Plan process.

In support of the vision, the following goals will inform the development of design options for University Way:

- establish University Way as a vibrant, year-round social and functional cross-road on campus
- create a welcoming point of arrival to the Okanagan campus that reflects its unique setting and is befitting of a world-class university
- enhance community life, safety and universal accessibility on campus
- take a whole systems/sustainability approach to the landscape and urban design, and
- anticipate how future planned academic buildings for Parking Lots A and F will integrate with the street.

#### LEGEND

- Existing Buildings
- Proposed New Building Capacity
- Project Area

### What is the UBC Okanagan Campus Plan?

The UBC Okanagan Campus Plan provides a long-term planning framework for existing and future academic and research activities, student housing, and associated campus services and infrastructure for the next 20 years.

The Campus Plan was approved by the UBC Board of Governors in September 2015 and was developed with input from the campus community and stakeholders.





# 3a University Way Redesign

## Process + Timeline

The process to redesign University Way between Alumni Avenue and International Mews is taking place over the next 9 months with multiple opportunities for campus community input.

### Process + Timeline

The redesign process for University Way will take place over the coming 9 months with multiple opportunities for campus community input. Construction will be completed in phases to coordinate with the John Hindle Drive extension and construction of neighbouring academic buildings.

#### Spring 2016

(WE ARE HERE)

Public consultation introducing process and seek input on opportunities to enliven this new public space

#### Fall 2016

Public consultation on proposed design options

#### Winter 2016/17

Final design approval, final design shared with campus community

*TBD*

*Construction Phase 2 between University Walk and Alumni Avenue, coordinated with construction of academic buildings on Parking Lots A and F*

#### Summer 2016

Site and technical analysis, design workshops with key campus stakeholders and development of design options for University Way

#### Winter 2016/17

Develop final design option based on campus community input and technical considerations

#### 2017

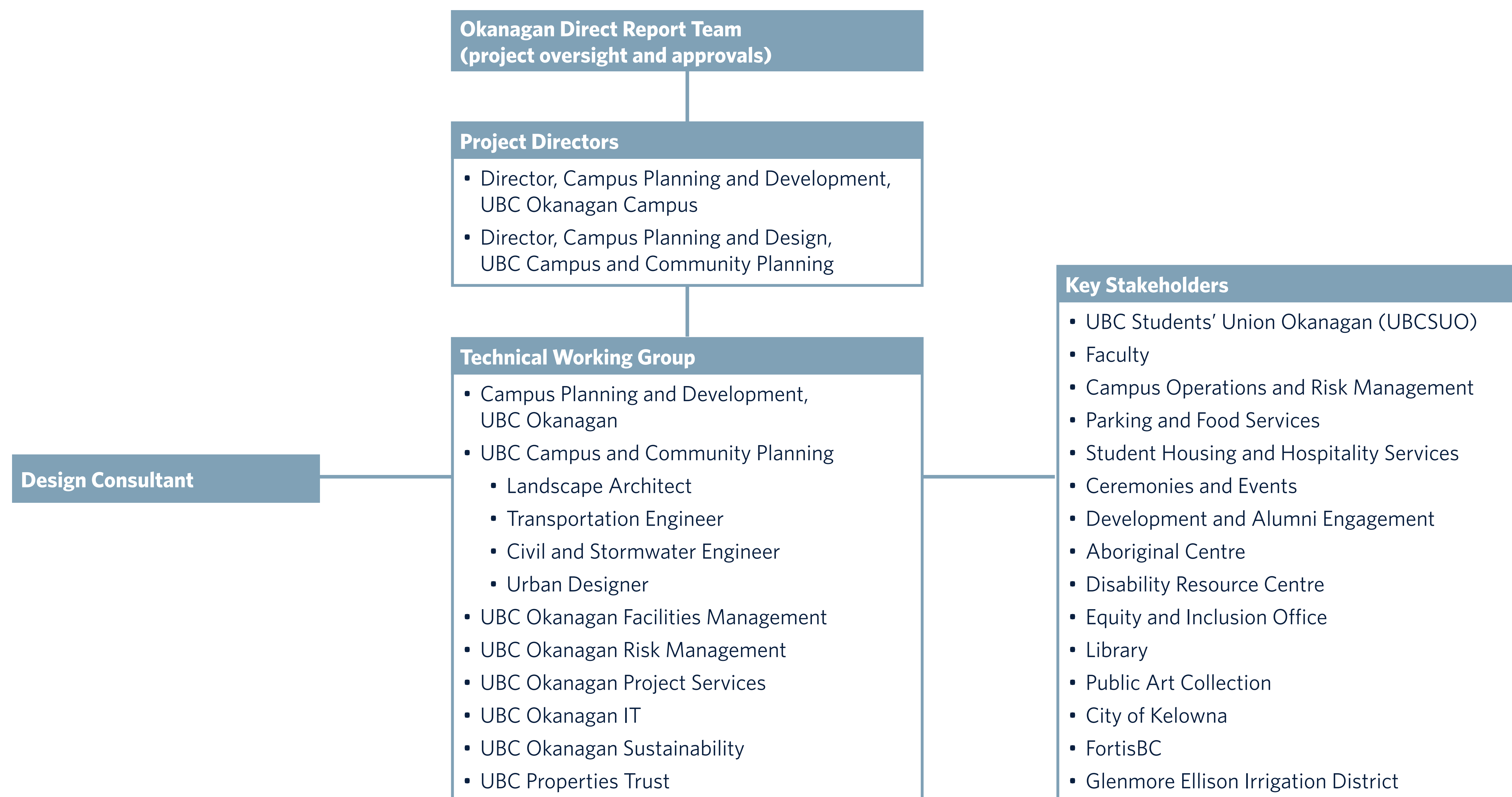
Construction Phase 1 between International Mews and University Walk, coordinated with opening of west campus access (John Hindle Drive)



# 3b University Way Redesign

## Project Structure

The process to redesign University Way is being led by Campus Planning and Development with guidance from the Okanagan Direct Report Team, a technical working group and with input from key stakeholders.

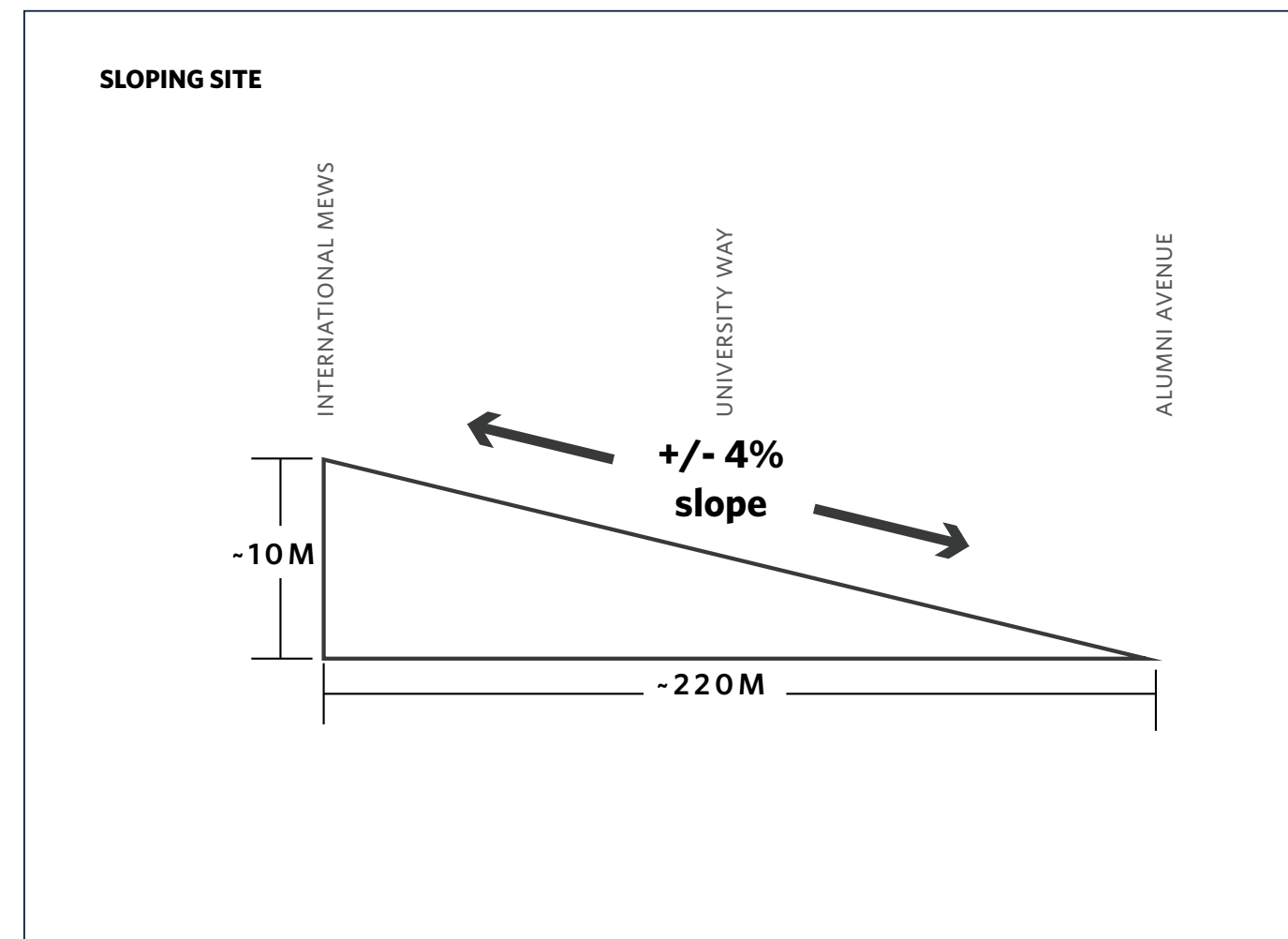




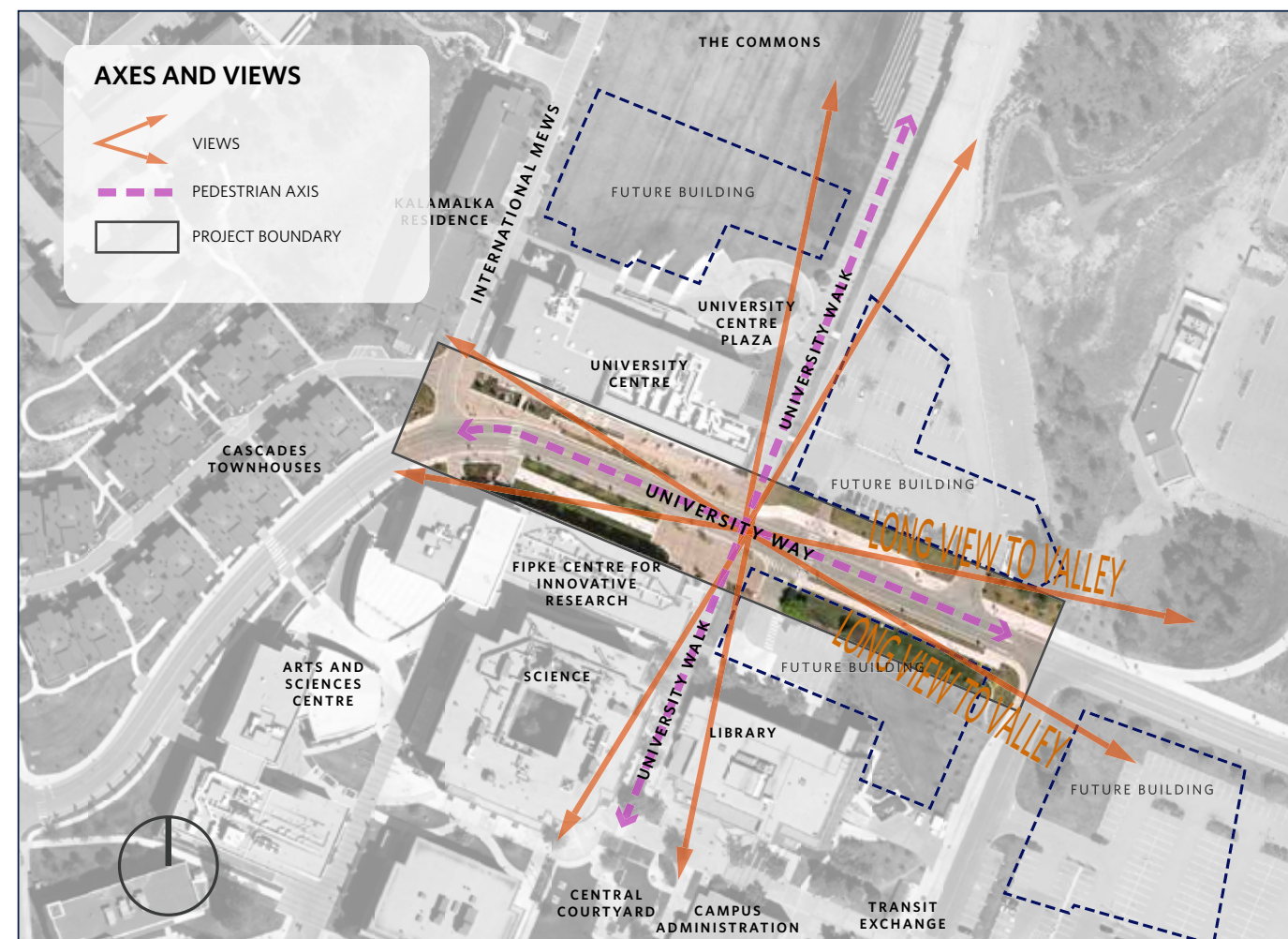
# 4 University Way Redesign

## Site Analysis

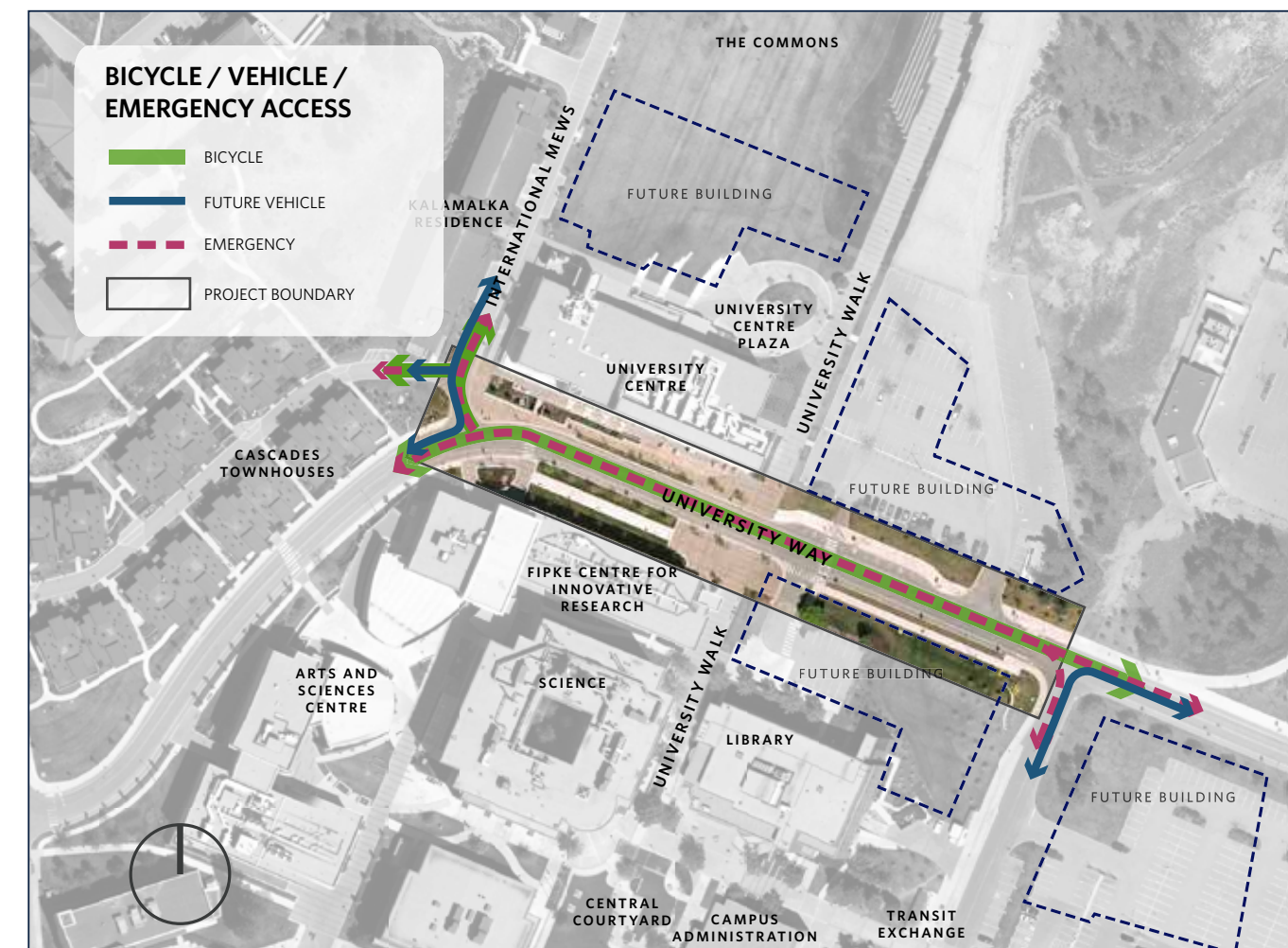
The diagrams here show how people and vehicles circulate through University Way now, accessibility considerations, views and sun exposure.



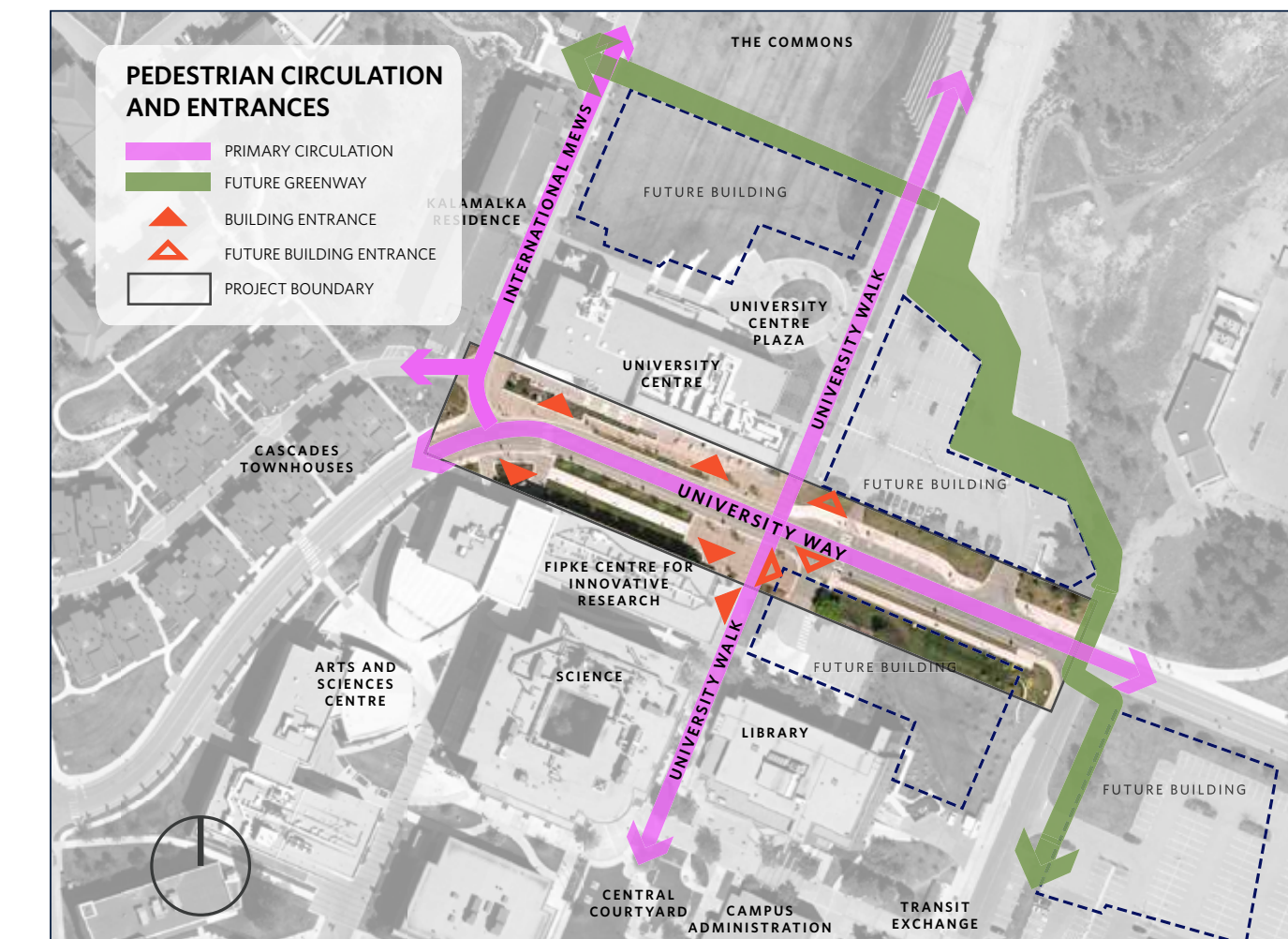
University Way has a slope of approximately 4 per cent between International Mews and Alumni Avenue.



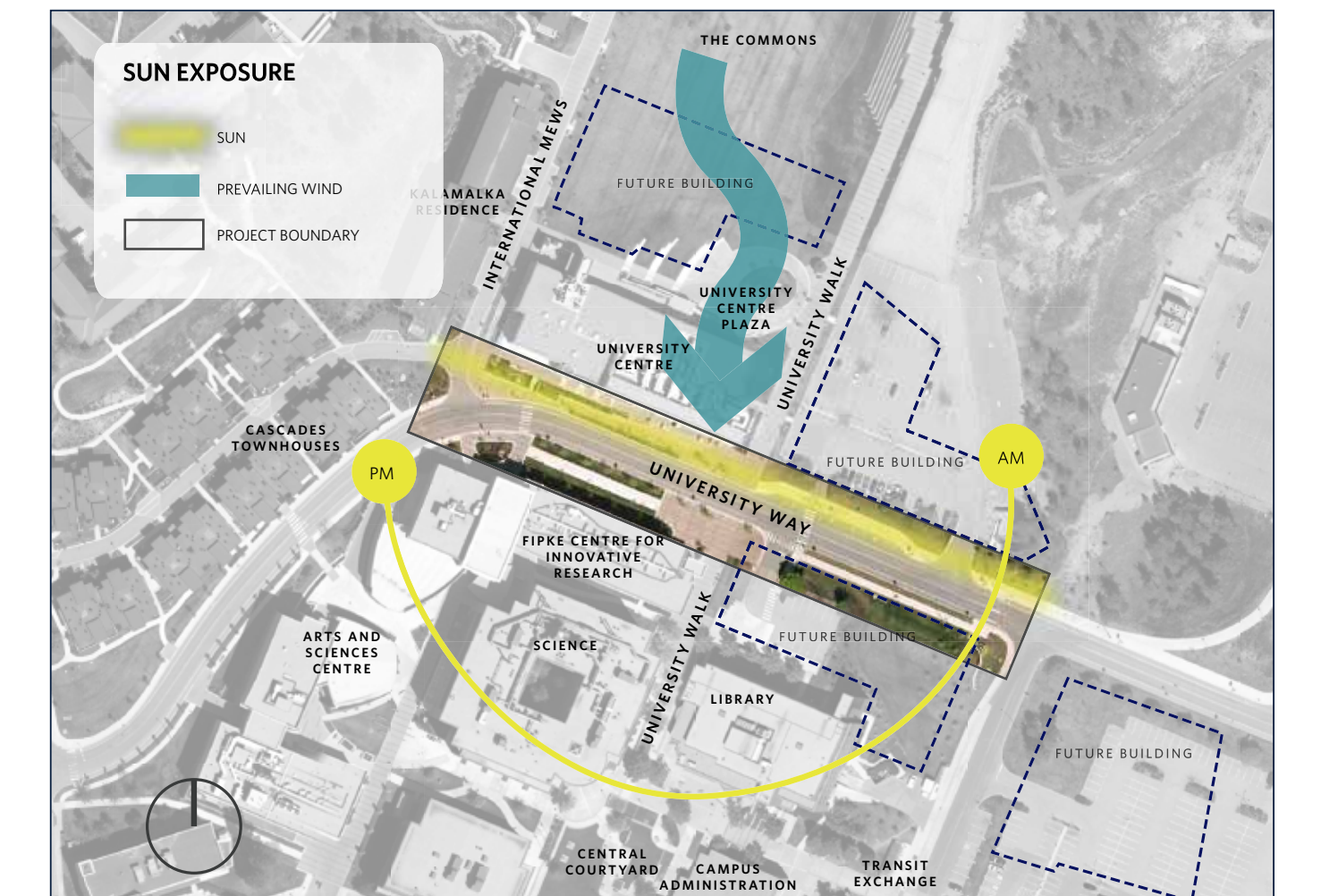
Views from locations along the University Way project area.



Future access for cyclists, vehicles, and emergency vehicles along a redesigned University Way.



Pedestrian routes along and across a redesigned University Way, including a future greenway, and to current and future buildings.



This diagram shows how the sun moves throughout the day. It shows that the majority of sunlight falls on the University Centre side of University Way. The diagram also shows the prevailing wind direction from the north.



# 5 University Way Redesign

## It's your turn to get creative.

Help us visualize what you think University Way could look like.

### Get started...



1

Grab a marker.



2

Pick up some  
stickies and  
sticker dots.



3

Talk to the urban  
design artist –  
tell him features  
and activities  
you'd like to see at  
University Way.



4

Like an idea you  
see? Put a dot  
beside it.



5

Have a comment  
on what you see?  
Write and post a  
stickie.



# 6 University Way Redesign

## Share Your Ideas for University Way!

We want to hear from you – what are your ideas for the redesign of University Way?

From March 23 – April 10, we are seeking your input on the redesign of University Way.

- 1 What are your thoughts on the proposed **project principles**?
- 2 What types of **events** or **activities** could take place at University Way between Alumni Avenue and International Mews?
- 3 What types of **seating, public art, installations** and other features would you like to see in the redesign of University Way?
- 4 What **sustainability features** could be incorporated into the design for University Way?
- 5 How should our **seasonal weather changes** be reflected in the design for University Way?

### Consultation Summary Reports

Please check back in May for the summary report of what we heard during this first phase of public consultation.





# UBC Okanagan Campus Plan Implementation Update

Following approval of the UBC Okanagan Campus Plan in September 2015, implementation of a number of projects and plans are underway.

## **Integrated Stormwater Management Plan - Public Consultation March 23 - April 10**

UBC is developing a plan to responsibly manage the stormwater that falls on the Okanagan campus and to accommodate the future growth of campus sustainably. Effective stormwater management will ensure that the campus's diverse wetland areas are sustained, reduce the need for irrigation and reduce stormwater runoff from buildings and hard surfaces – which are all criteria to supporting a healthy ecosystem.

A first phase of public consultation to develop the Integrated Stormwater Management Plan (ISMP) is now underway, learn more and participate online or in person. Here's how:

- Online feedback form at [sustain.ok.ubc.ca](http://sustain.ok.ubc.ca)
- Attend the Public Open House on April 7, 11am – 2pm, Fipke Foyer

A second phase of consultation will take place in Fall 2016.

## **University Way “Main Street” Redesign Process - Public Consultation March 23 - April 10**

UBC is undertaking a process to redesign University Way between Alumni Avenue and International Mews at the heart of campus. Through the redesign process, this portion of University Way will be transformed into a vibrant pedestrian and bicycle-only “Main Street” that supports student gatherings, informal interaction, festivals and celebrations.

A first phase of public consultation to redesign University Way is now underway, learn more and participate online or in person. Here's how:

- Online feedback form at [campusplanning.ok.ubc.ca](http://campusplanning.ok.ubc.ca)
- A Public Open House took place on March 30 from 11am – 2pm at the University Centre, Main Level Entrance.

A second phase of consultation will take place in Fall 2016.

## **UBC Okanagan Design Guidelines Update**

Following approval of the UBC Okanagan Campus Plan, UBC initiated a technical review and update of the UBC Okanagan Design Guidelines (last revised in 2008) in fall 2015.

The Design Guidelines provide design guidance for all new facilities, outdoor spaces and landscapes on campus. The update will ensure consistency with the vision and general planning and design directions of the Campus Plan and Whole Systems Infrastructure Plan (2015), and incorporate new design ideas derived from consultation with the campus community through the Campus Plan process.

