

Welcome!

Thank you for your interest in the update to the Campus Plan, which guides the physical development of the Okanagan campus over the next 20 years.

This is the first phase of engagement on the Campus Plan Update. During this engagement, you will learn about the Campus Plan and provide input on the emerging themes of the plan updates.

Your feedback will inform the development of guiding principles and strategies which will be used to shape the plan updates. The draft Campus Plan Update will be presented back to the campus community this fall.

We want to hear from you

Please provide your input here or through the online survey (see QR link below).

The survey will be open from **January 22nd to February 9th**. Completing the survey will enter you into a draw for one of five \$50 UBC Bookstore gift cards.

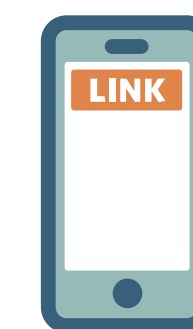
Scan below to take the online survey:



Open your camera app

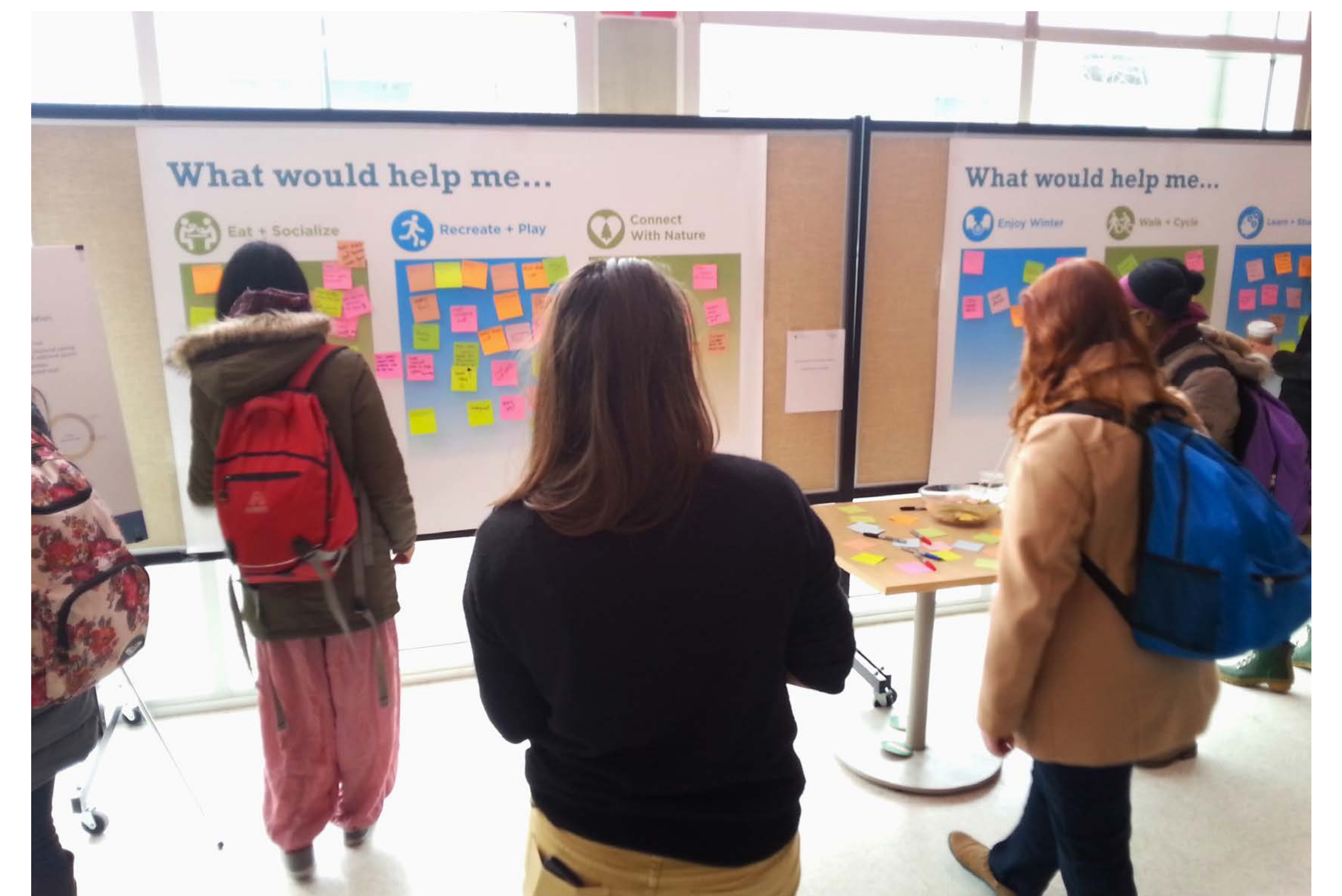


Frame the QR code



Click on the link

or visit campusplanning.ok.ubc.ca/cpu for more info



The 2015 Campus Plan

The 2015 Campus Plan established an enduring vision for the future of UBC Okanagan. Here are some examples of how the 2015 Campus Plan shaped the campus you see today:



A new access to the campus from John Hindle Drive provides direct access for cyclists, pedestrians, and vehicles to the west side of campus.



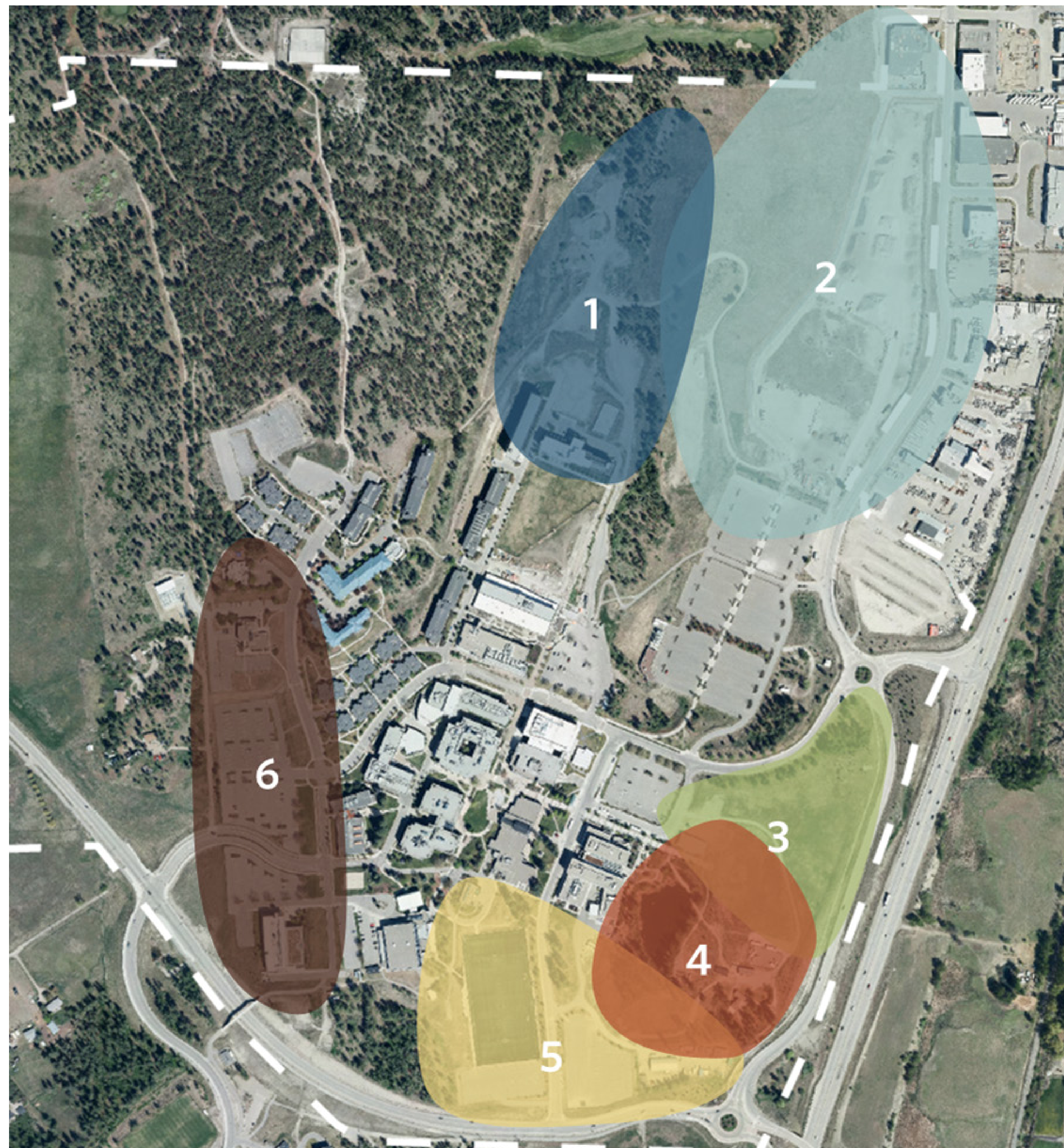
The pedestrianisation of University Way has transformed this road into a public space for connecting and gathering.



The transit exchange opened in 2017. The project included nine new bus bays and four bus layover stations, as well as transit shelters, transit lanes and cycling facilities.

Campus Plan Update

Now, almost 10 years later, the Campus Plan Update provides the opportunity to refine and enhance the directions in the 2015 Campus Plan to incorporate new and emerging priorities, including climate action, Indigeneity, inclusivity, accessibility, and wellbeing, and integrate campus growth with that of Kelowna and the surrounding region.



This map provides a rough idea of where on campus there will be changes as an outcome of this Update:

- 1. Upper Bench / Upper Innovation Precinct:** Opportunities include new neighbourhood housing, public amenities and transport connections.
- 2. Lower Innovation Precinct:** Opportunities include mixed use space for housing and commercial, public amenities, and research & innovation partnerships.
- 3. The Okanagan Grasslands:** Opportunities include integration with development on E Lot, eastern campus gateway, landscape restoration, campus infrastructure (e.g., rainwater management) and transition to Indigenous landscape area (#4).
- 4. Pond & Syilx Indigenous Landscape:** Opportunities include landscape naturalization, outdoor gathering space and space for Indigenous teaching and learning.
- 5. South Campus Neighbourhood:** Opportunities include campus gateway from the south and athletics and student housing needs.
- 6. Upper / West Side of Campus:** Opportunities include parking structure and connection to West Campus.

Please note area boundaries illustrated and potential opportunities and considerations listed are not finalized and will be refined through the Campus Plan Update process.

Emerging Themes

To address these new priorities, strategies around seven emerging themes have been identified through technical work, discussions with the UBC administration, and early conversations with UBC Okanagan community members.



Academic Mission: Identify additional development sites and the potential to enhance existing spaces to support learning and research.

Inclusivity, Accessibility and Wellbeing: Ensure the diversity of the campus community is reflected in the Campus Plan Update to achieve the best learning, working, and living environments for all.

Connectivity and Transportation:

Support improved connectivity to, from and around the campus and ensure alignment with the City of Kelowna's 2040 Transportation Master Plan.

Honouring Place and Protocols:

Strengthen recognition of our location in the traditional, ancestral and unceded territory of the Syilx Okanagan Nation.

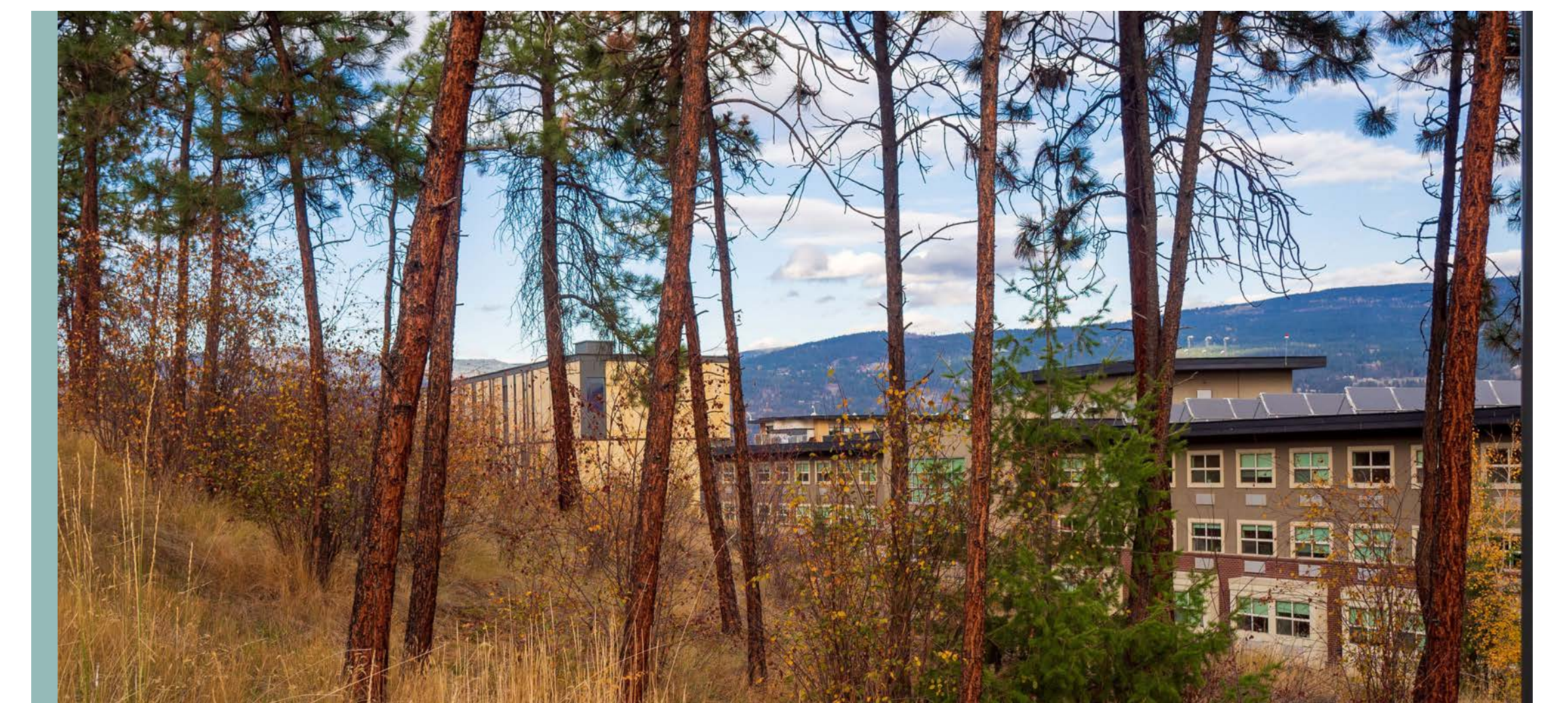
Climate Action and Sustainability:

Support the targets set out in the university's climate action plan in reducing greenhouse gas emissions while fostering a climate-adaptive and resilient campus.

Campus as a More Complete

Community: Enhance and expand on-campus housing options and ensure day to day needs of the campus community are met within the context of a growing Kelowna Gateway area and broader region.

Landscape and Ecology: Protect and enrich campus ecology and biodiversity and support connecting landscapes systems beyond the campus.



Academic Mission

Identify additional development sites and the potential to enhance existing spaces to support learning and research.

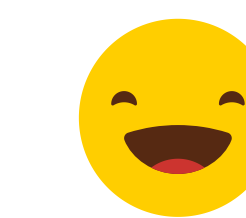
Preliminary Strategies

The Campus Plan Update will:

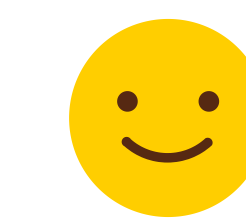
- Identify new academic development sites as well as possible redevelopment, renewal, and infill sites in ways that use campus land efficiently, leverage existing infrastructure, build vitality, and optimize compatibilities between uses;
- Pursue taller buildings on campus (including above current airport zoning regulations) to benefit the university and the campus community and to use our land efficiently;
- Continue to support innovation and knowledge creation through spaces that promote interaction, collaboration, and learning and research partnerships; and
- Integrate academic and non-academic spaces in ways that support learning and research as part of living on campus.

Feedback

What do you think about the Academic Mission theme and proposed strategies?



I really like it



I like most aspects of it



I have mixed thoughts



I dislike most aspects of it



I really don't like it

Campus as a More Complete Community

Enhance and expand on-campus housing options and ensure day to day needs of the campus community are met within the context of a growing Kelowna Gateway area and broader region.

Preliminary Strategies

The Campus Plan Update will:

- Support a mix of land uses including academic, athletics, housing, recreational, agricultural, and ecological uses across the campus;
- Establish principles to inform new neighbourhood development: density, scale, form, connections, amenities, sustainable performance, ecology, and parking;
- Explore a variety of housing types and designs for potential new neighbourhood areas (including mixed-use developments, townhouse, mid-rise and high-rise forms);
- Ensure neighbourhood services and amenities reflect the needs of the UBC Okanagan community, including families with children, and are within close walking distance to all residents;
- Identify new development sites, as well as possible redevelopment, renewal or infill sites, to accommodate the current student housing target and additional “flexible sites” that can accommodate future student housing needs as required and/or other uses; and
- Identify new development sites and/or opportunities to integrate spaces for services and amenities, including child care and expanded student-oriented facilities, to enhance the student experience on campus.

Feedback

What do you think about the Campus as a More Complete Community theme and proposed strategies?



I really like it



I like most aspects of it



I have mixed thoughts



I dislike most aspects of it



I really don't like it

Honouring Place and Protocols

Strengthen recognition of our location in the traditional, ancestral and unceded territory of the Syilx Okanagan Nation.

Preliminary Strategies

The Campus Plan Update will:

- Explore ways to build on and strengthen existing Syilx Okanagan and Indigenous relationships;
- Create spaces that are welcoming to and inclusive of Syilx Okanagan and all Indigenous peoples;
- Continue efforts to integrate Syilx Okanagan expression throughout the campus, including land acknowledgments, cultural interpretation and expression, building and place naming in the nsyilxcn language, and public artwork;
- Establish an Indigenous-focused area of campus for gathering, education and ceremony around the Outdoor Gathering Space and pond area in the southeastern portion of campus; and
- Continue to transform campus landscapes that integrate Syilx knowledge and expertise, support the tradition and renewal of Syilx practices, and incorporate traditional ways of knowing and caring (e.g., places where Elders can teach youth about plants and harvesting).

Feedback

What do you think about the Honouring Place and Protocols theme and proposed strategies?



I really like it



I like most aspects of it



I have mixed thoughts



I dislike most aspects of it



I really don't like it

Climate Action

Support the targets set out in the university's climate action plan in reducing greenhouse gas emissions while fostering a climate-adaptive and resilient campus.

Preliminary Strategies

The Campus Plan Update will:

- Support implementation of the Climate Action Plan 2030 targets for reducing GHGs and the Transportation Plan through the continued creation of a compact, diverse, vibrant, and sustainable complete university community;
- Continue to ensure growth and development considers climate change impacts and minimizes carbon emissions as a result of new building construction and operations;
- Continue to encourage development that optimizes existing infrastructure and assets to minimize operational and embodied carbon; and
- Foster a climate-adaptive and resilient campus by incorporating adaptive building, infrastructure, and landscape strategies, and enhancing and enriching biodiversity and natural systems while incorporating Indigenous ways of knowing.

Feedback

What do you think about the Climate Action theme and proposed strategies?



I really like it



I like most aspects of it



I have mixed thoughts



I dislike most aspects of it



I really don't like it

Landscapes and Ecology

Protect and enrich campus ecology and biodiversity and support connecting landscapes systems beyond the campus.

Preliminary Strategies

The Campus Plan Update will:

- Ensure natural systems and the campus ecology continue to shape future development and integrate the campus with its surrounding ecosystem;
- Continue to maximize biodiversity and rainwater management in open spaces;
- Enhance ecological connectivity and the role the campus can play in strengthening healthy and resilient natural systems;
- Continue to integrate whole systems thinking and Indigenous knowledge into the design and management of campus landscapes; and
- Connect people to nature through a campus network of natural and urban open spaces and ensure they are accessible and nurturing to diverse groups of people.

Feedback

What do you think about the Landscapes and Ecology theme and proposed strategies?



I really like it



I like most aspects of it



I have mixed thoughts



I dislike most aspects of it



I really don't like it

Inclusivity, Accessibility and Wellbeing

Ensure the diversity of the campus community is reflected in the Campus Plan Update to achieve the best learning, working, and living environments for all.

Preliminary Strategies

The Campus Plan Update will:

- Ensure the campus continues to foster diversity, accessibility, and inclusivity through buildings, open spaces and neighbourhoods that enhance individual and community wellbeing through their design;
- Support the continued expansion of welcoming, supportive and safe spaces for UBC Okanagan's diverse campus community, with particular emphasis on historically marginalized, equity-deserving groups;
- Continue to pursue a barrier-free, universally-accessible campus that provides dignified, welcoming and effective access to people of all ability levels;
- Design for safety and personal security;
- Leverage and enhance existing efforts to create a compact campus that prioritizes walking and rolling; and
- Celebrate the diversity of the campus community with spaces for interaction, artistic and cultural expression, and community building.

Feedback

What do you think about the Inclusivity, Accessibility and Wellbeing theme and proposed strategies?



I really like it



I like most aspects of it



I have mixed thoughts



I dislike most aspects of it



I really don't like it

Connectivity and Transportation

Support improved connectivity to, from and around the campus and ensure alignment with the City of Kelowna's 2040 Transportation Master Plan.

Preliminary Strategies

The Campus Plan Update will:

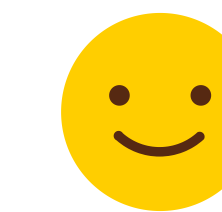
- Leverage the arrival of enhanced transit service to the region and the campus to expand access to housing options for faculty, staff and students and enable future academic growth and partnerships on and off the campus;
- Anticipate new and enhanced transit and active transportation connections to surrounding neighbourhoods; and
- Build on and strengthen connectivity within the campus through a safe, convenient, and efficient transportation network that prioritizes active transportation such as walking, rolling and cycling.

Feedback

What do you think about the Connectivity and Transportation theme and proposed strategies?



I really like it



I like most aspects of it



I have mixed thoughts



I dislike most aspects of it



I really don't like it

Next Steps

Thank you for learning about the UBC Okanagan Campus Plan Update!

- The feedback from this engagement, alongside supporting technical work, will be used to refine the Guiding Principles and Strategies. These will be included in the Final Terms of Reference, which will guide the Campus Plan Update.
- The Final Terms of Reference will be submitted to Okanagan Leadership Council for approval in Spring 2024.
- A draft Campus Plan Update will then be developed and presented to the community for feedback in fall 2024.
- A revised Update, informed by community input, will then be submitted to the UBC Board of Governors for adoption in late 2024.



Feedback



Do the Emerging Themes represent what you hope to see for the future of the campus?
Is there anything missing that you want to add?